

PSAM 12

Probabilistic Safety Assessment and Management
22-27 June 2014 • Sheraton Waikiki, Honolulu, Hawaii, USA

Use of Corrective Action Programs at Nuclear Plants for Knowledge Management

Pamela Fran Nelson

National University of Mexico (UNAM)



June 26, 2014

Content

- ▶ Description (Scope, data, model)
- ▶ One tool
- ▶ Example
- ▶ Database specifications

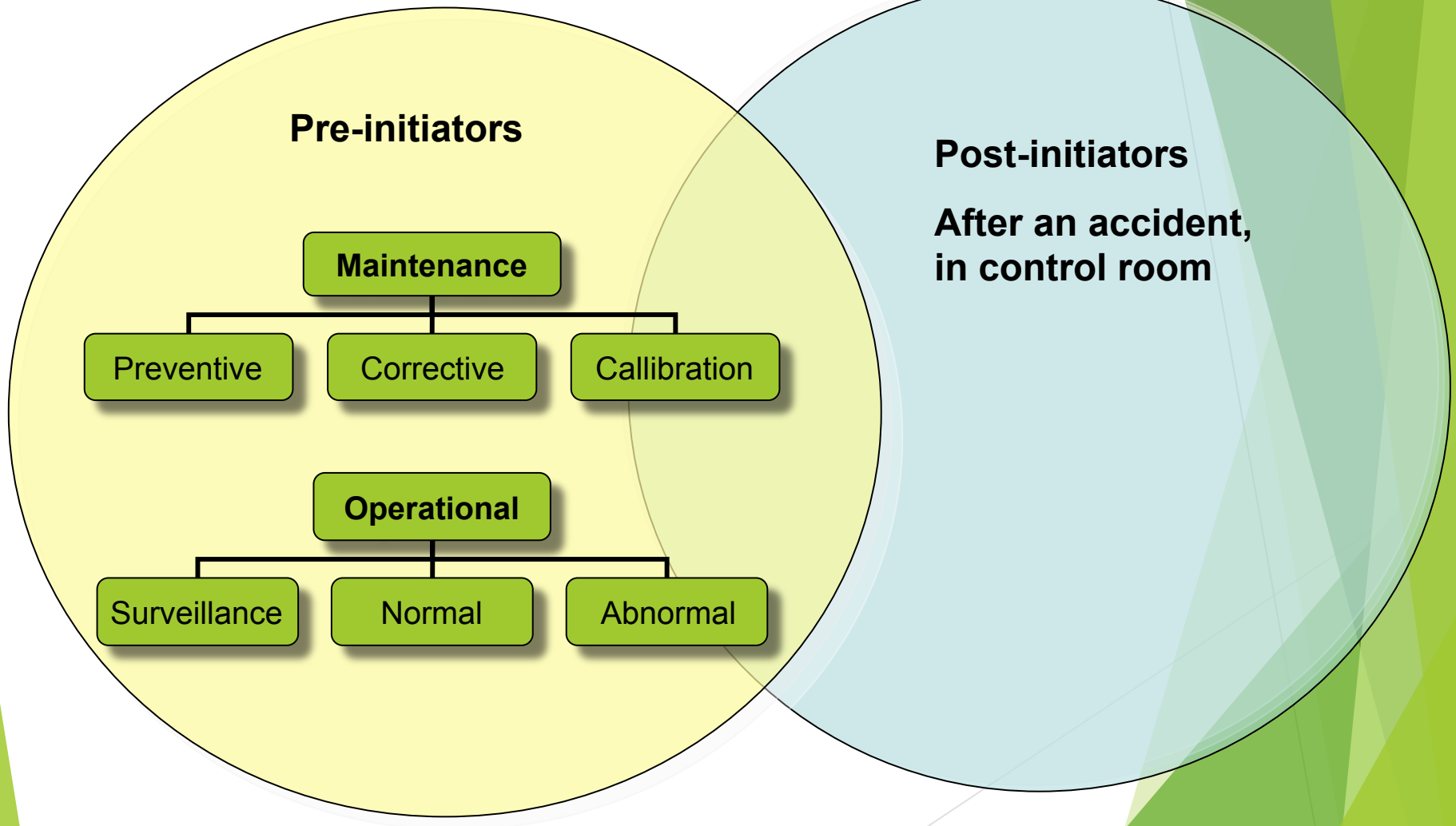


General Objective

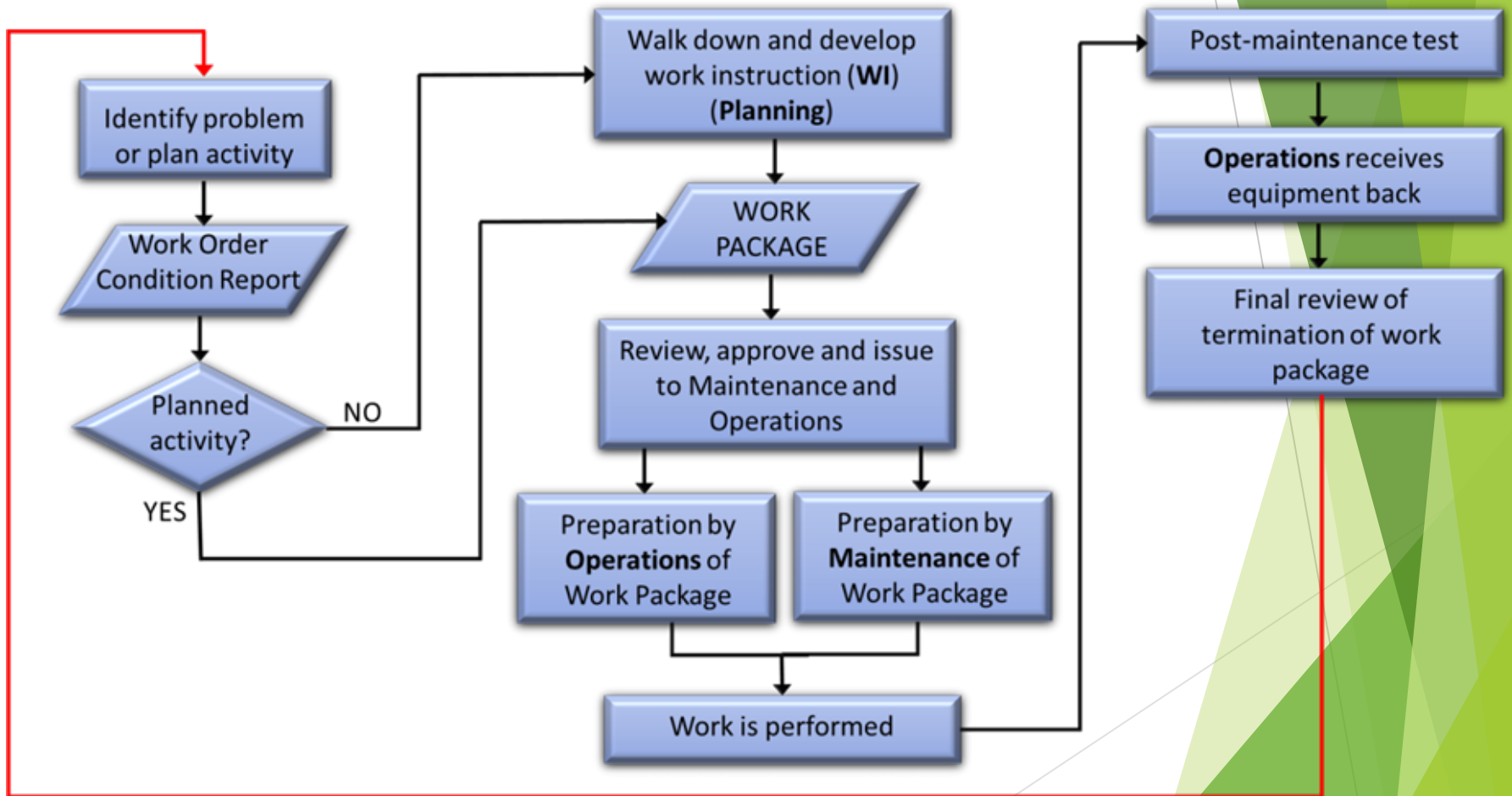
- ◆ **Develop a tool to reduce human errors**
 - ◆ To increase safety
 - ◆ To avoid repetition
 - ◆ To track and trend
 - ◆ For knowledge management
- ◆ **Hypothesis: The Corrective Action Programs are a source of data**

SCOPE

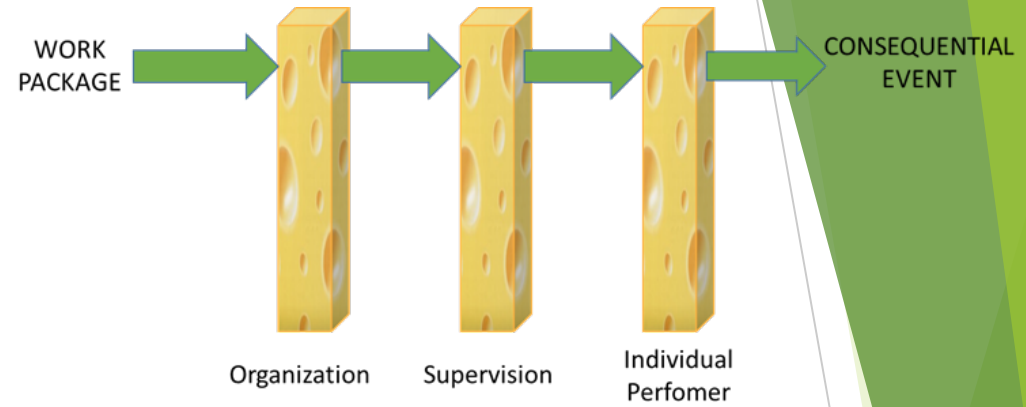
Human Errors



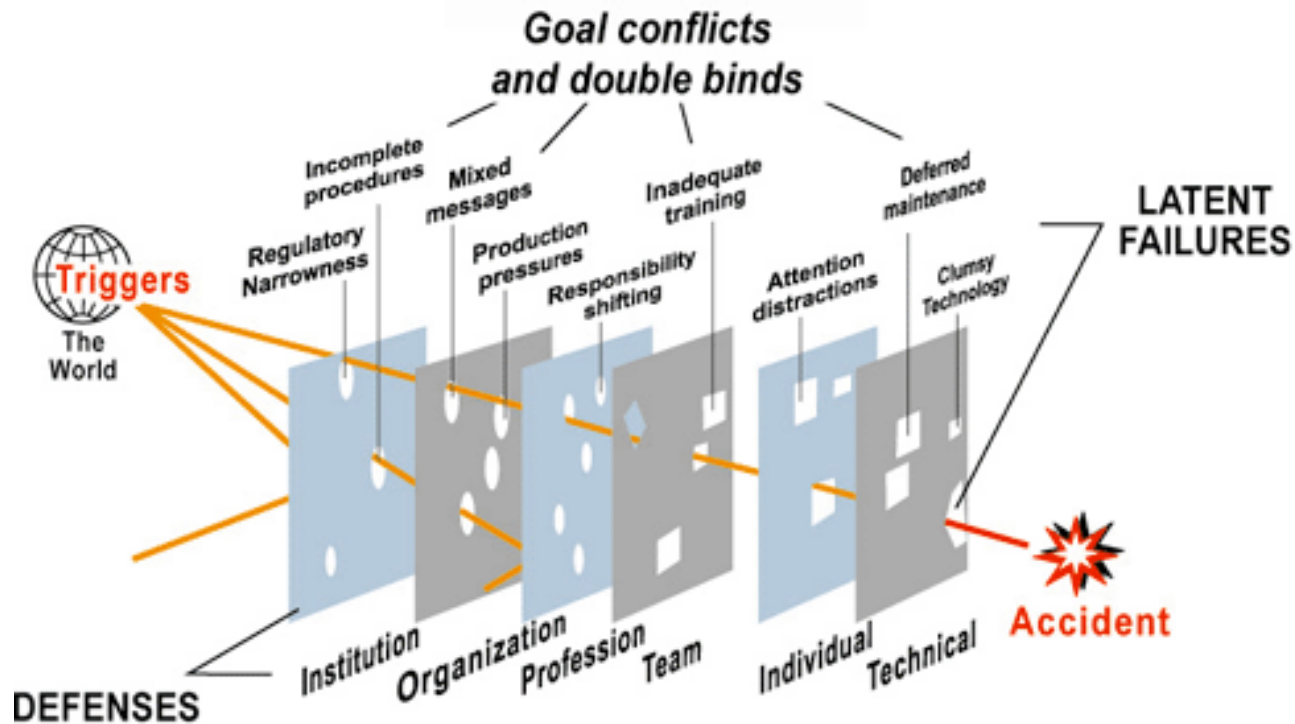
Flow Diagram for Work Order in a Nuclear Power Plant

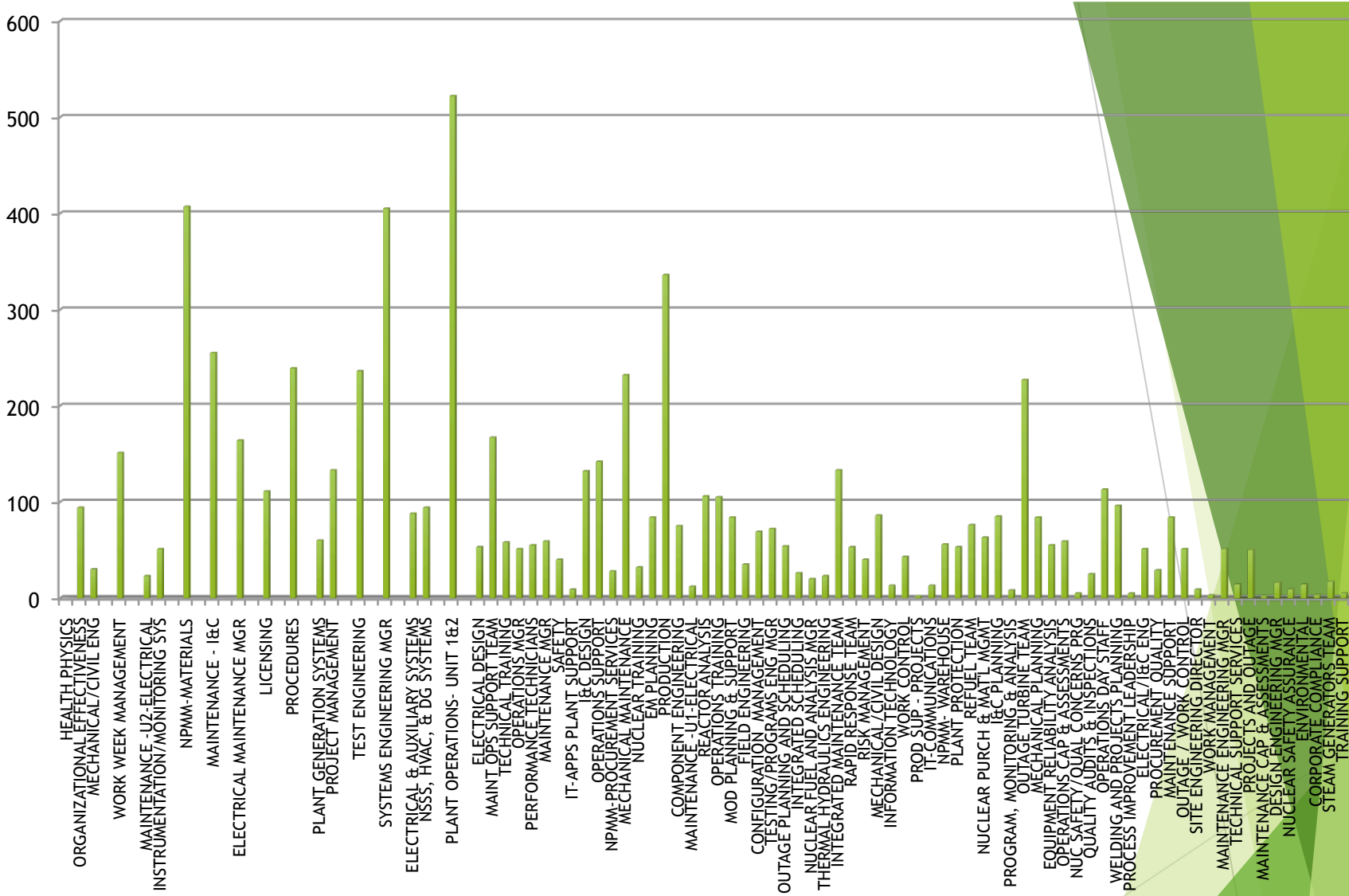


Defense in Depth



The Latent Failure Model of Complex System Failure



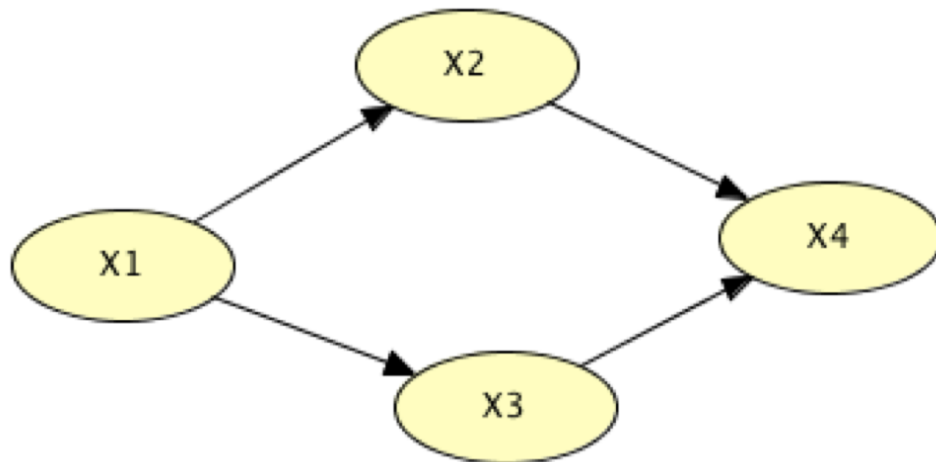


CRs per Department

Causes

Variable	Description	Examples
DE	Equipment Design/Manufacture/Performance Monitoring	Predictive Maintenance Program Inadequacy, Preventive Maintenance Program Inadequacy
HF	Human Factors/Work Environment	Human Factors Not Properly Addressed in Work Area/Equipment
LS	Job Leader/Supervisory Methods	Pre-job Preparation or Briefing Inadequate, Prioritization of Work Activities Inadequate
MA	Management Assessment/Corrective Action	Organization Not Sufficiently Self-Critical, Cause Analysis for Known Problem Inadequate
MC	Change Management	Need for Change Not Recognized, Change Not Implemented in a Timely Manner
MP	Management Practices	Communication Within an Organization Inadequate/Untimely, Communication Between Organizations Inadequate/Untimely, Management Practices Promote/Allow Unacceptable Behaviors
MR	Management Resources	Prioritization/Scheduling of Activities Inadequate (Management level)
PA	Procedure Adherence	Procedure/Instruction/Step Implemented Incorrectly (Intent Not Met)
TR	Training	Necessary Initial/Refresher Training Not Provided
WI	Work Instructions	Document Contents Incorrect or Missing
WP	Work Practices	Slip or Lapse

Bayesian Networks

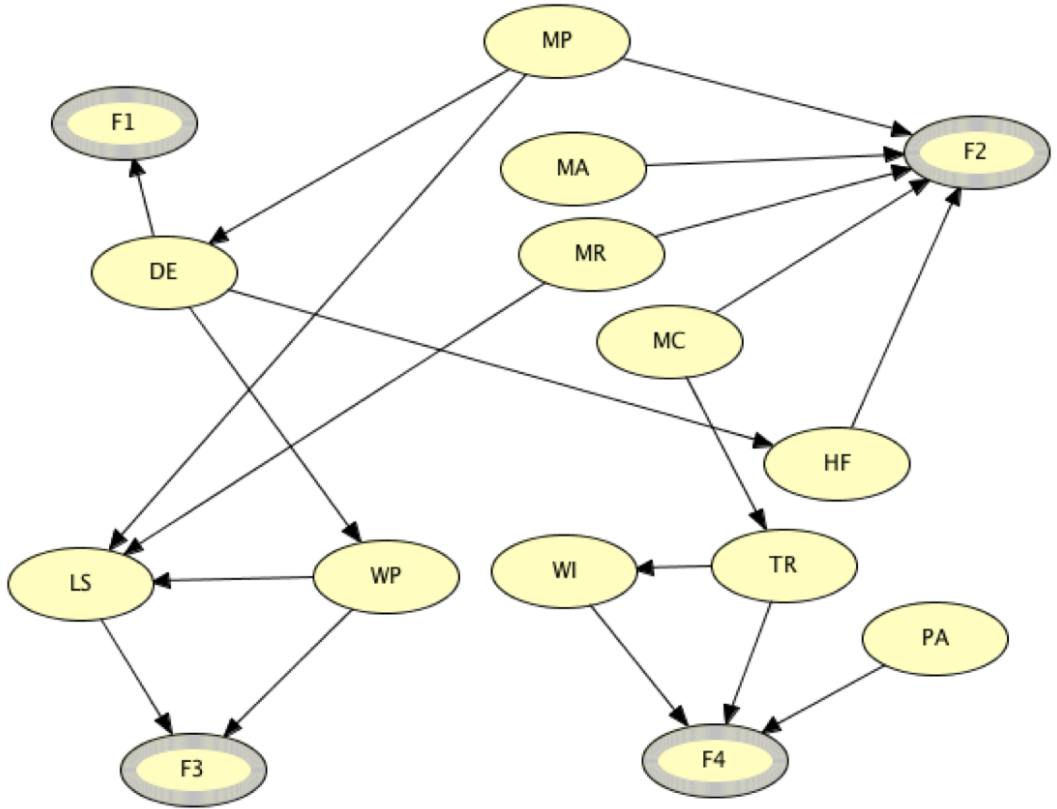


$$Pr (X1,X2,X3,X4) = Pr (X1) * Pr (X2|X1) * Pr (X3|X1) * Pr (X4|X2,X3)$$

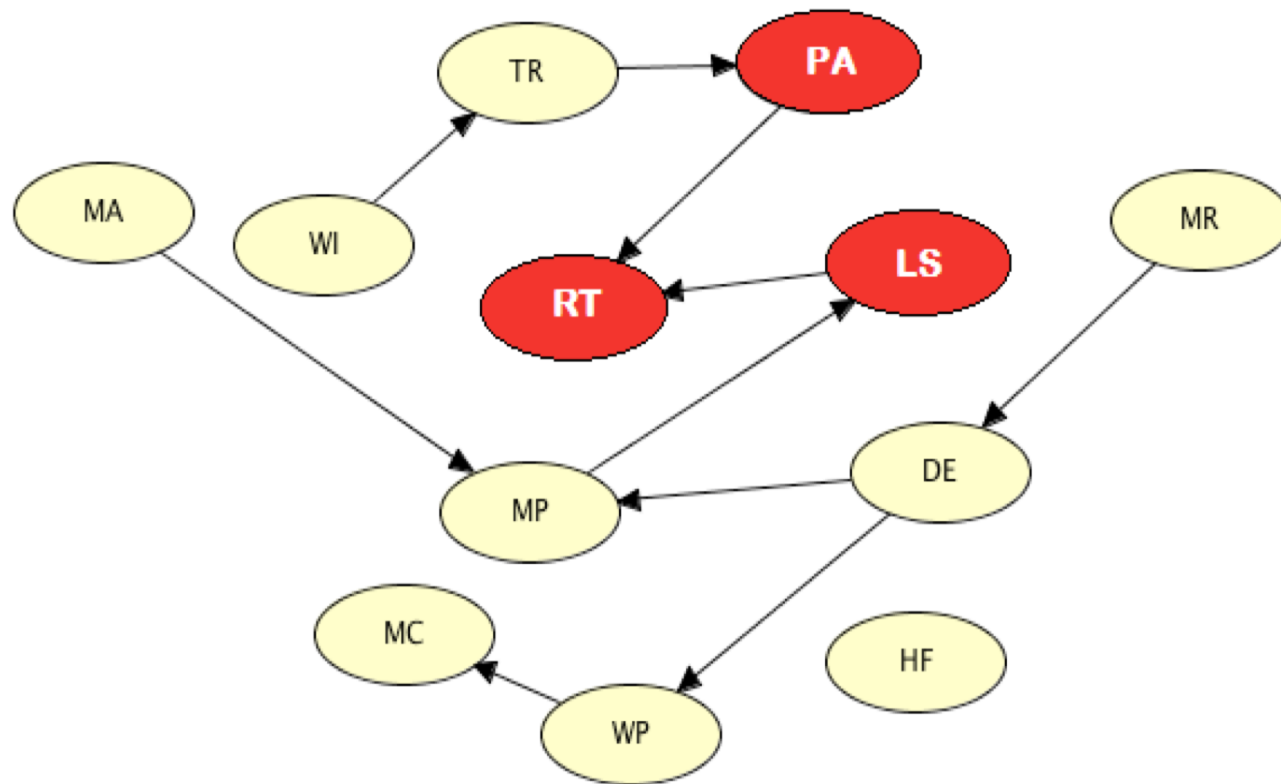
Data from CAP

Condition	Report	DE	HF	LS	MA	MC	MP	MR	PA	WI	WP	TR
	1	0	0	1	0	0	1	0	0	0	0	0
	2	1	0	0	0	1	0	0	0	0	0	0
	3	1	0	0	1	0	0	0	0	1	1	0
	4	0	0	0	0	0	0	0	0	1	0	0
	5	0	0	0	0	1	0	0	0	1	0	0
	6	1	0	0	0	0	0	0	0	0	0	0
	7	0	0	1	1	0	1	0	0	0	1	0
	8	1	0	0	0	0	0	0	0	0	0	0
	9	1	0	1	1	0	1	0	0	1	0	1
	10	0	0	1	1	0	1	1	0	0	1	0

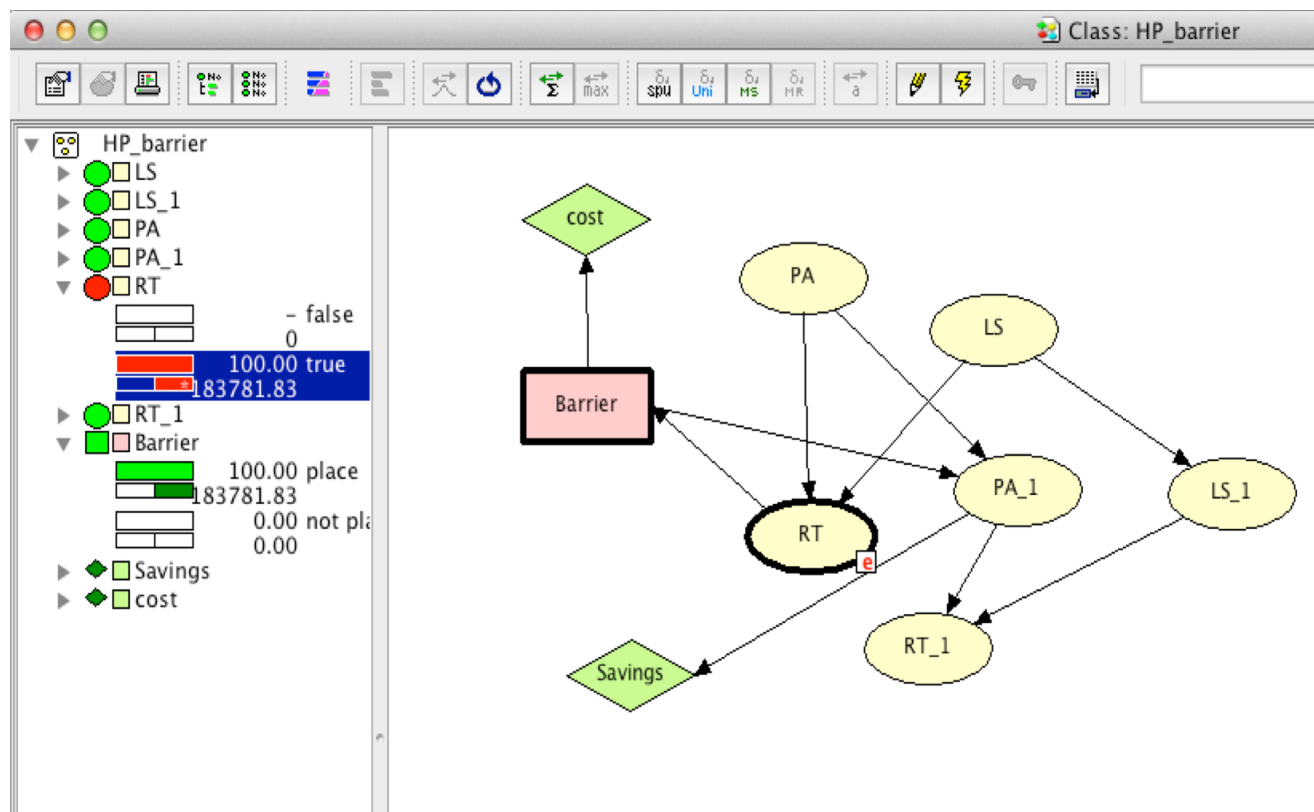
Network for Event Types from CAP



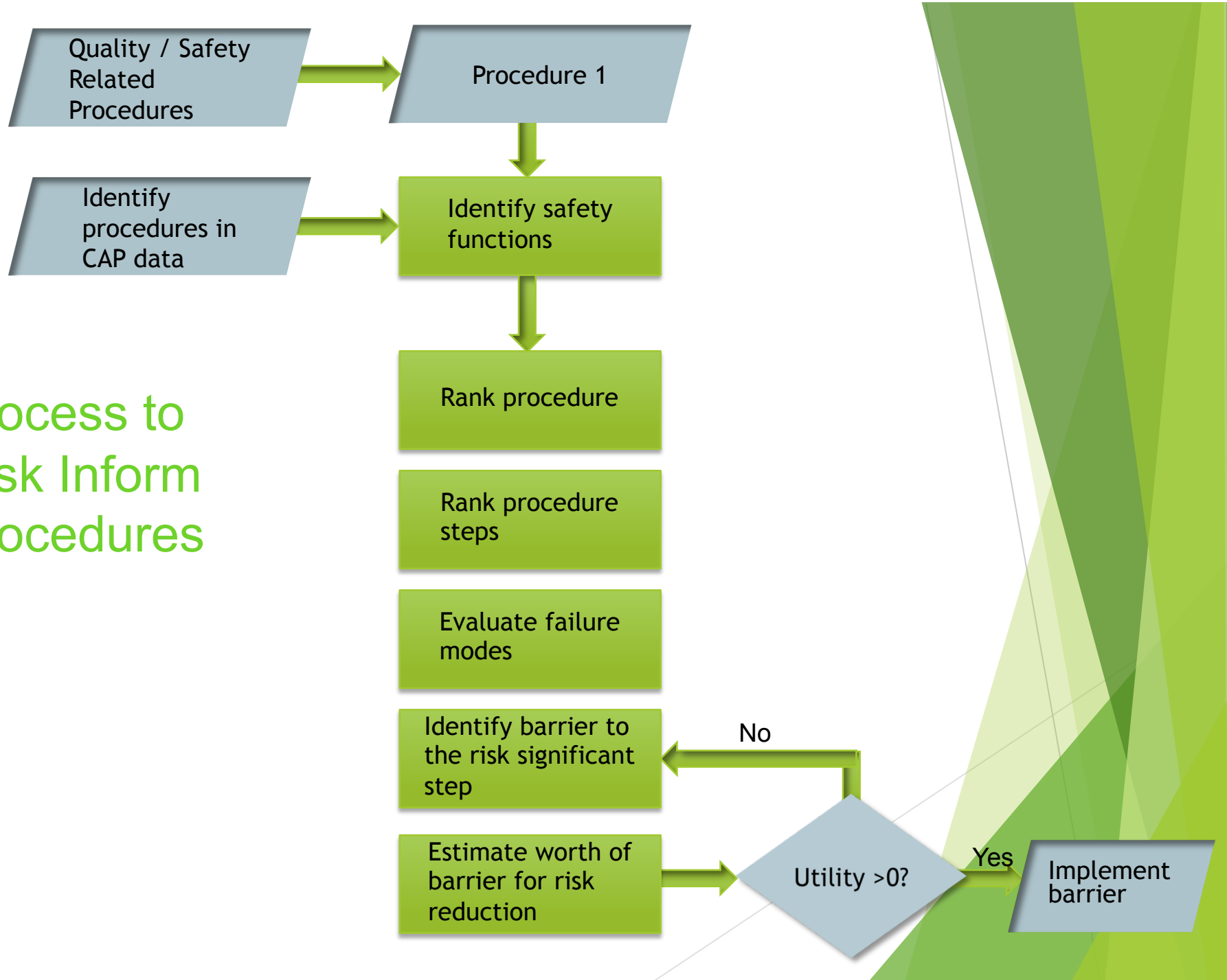
Learned Structure



Influence Diagram

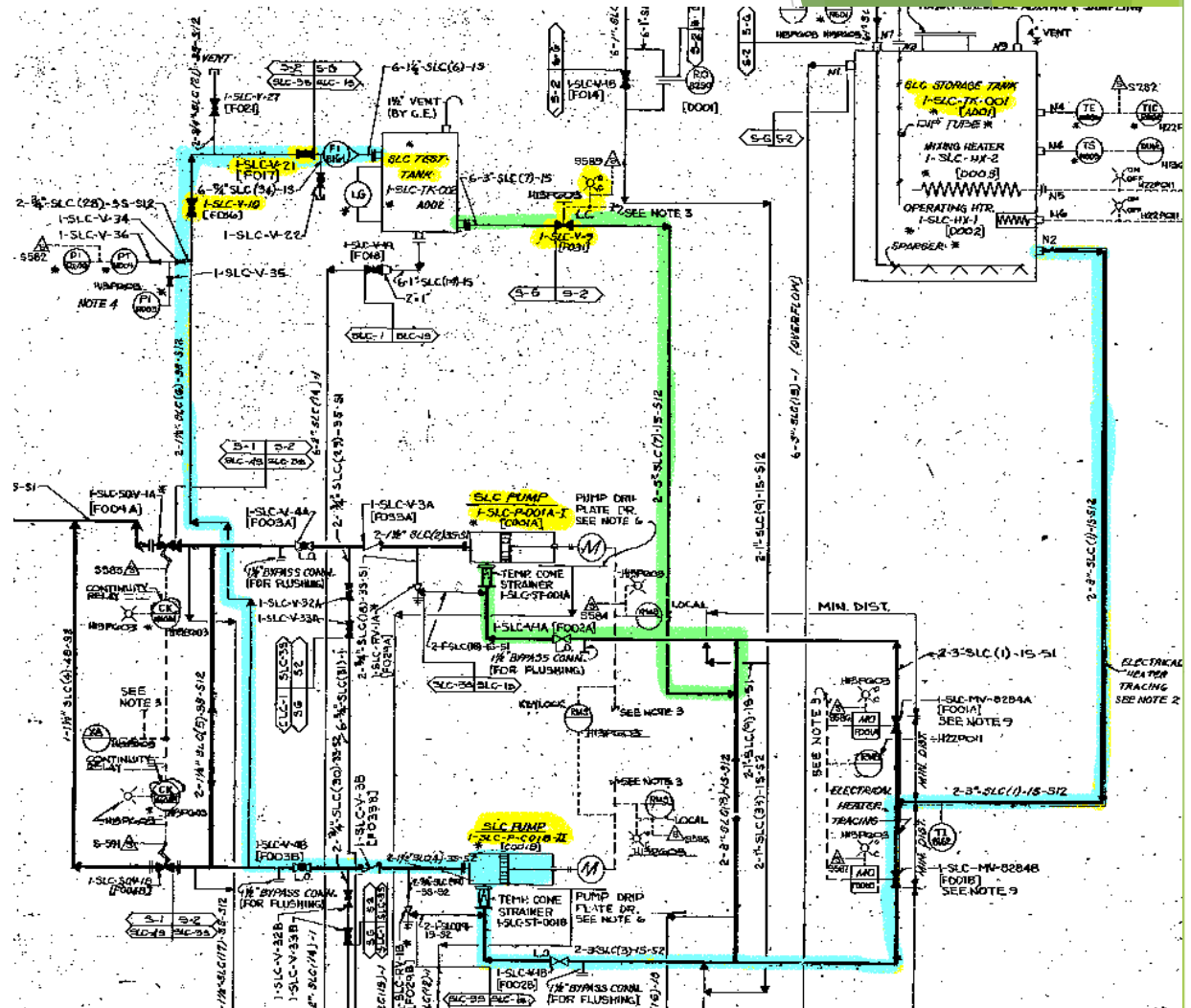


Process to Risk Inform Procedures



Example

- ▶ Procedure to test SLC pumps
- ▶ Safety Functions: shut down plant in ATWS
- ▶ Failure Mode: deviate flow
- ▶ Procedure Steps: close v10 and v21
- ▶ Barrier Options:
 - ▶ Holding Point, Warning,
 - ▶ Required Photo (cost of camera, software, admin. controls),
 - ▶ Contract additional supervisor
- ▶ Evaluate Barriers



Database: New Structure

- Date
- CR number
- Organization
- Equipment
- Tag #
- Error
- Document
- Plant state
- Activity when detected
- Factor
- Final State
- Causes
- PRA

